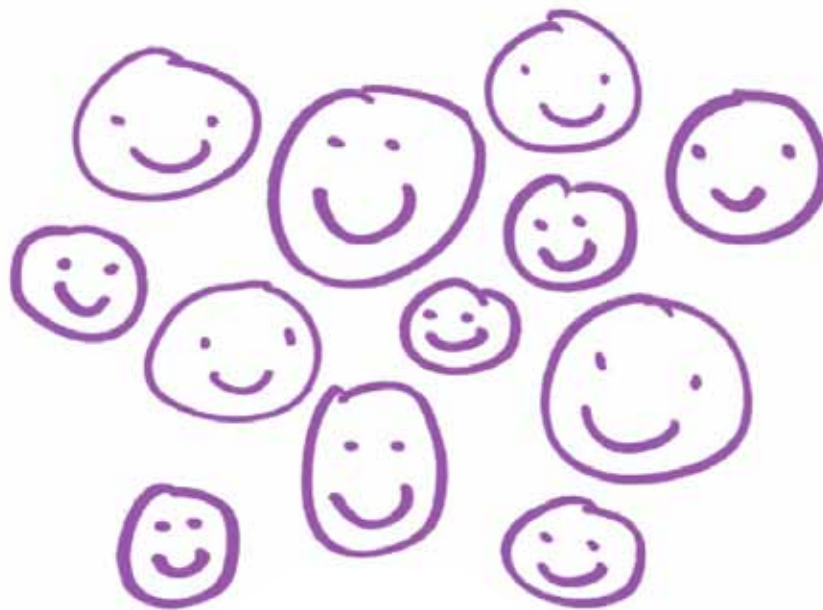


# Your kids are waiting to show you what they know.



**mCLASS®:CIRCLE™ helps target classroom activities based on what each child knows – and needs – now.** As the original provider of mobile-to-Web CIRCLE™ assessments, Wireless Generation has extensive experience working with the Children’s Learning Institute, providing a superior level of service to customers around the country and scaling to meet specific school and district needs. mCLASS:CIRCLE offers unparalleled ease of use, reporting, and ability to apply assessment information toward early childhood development.

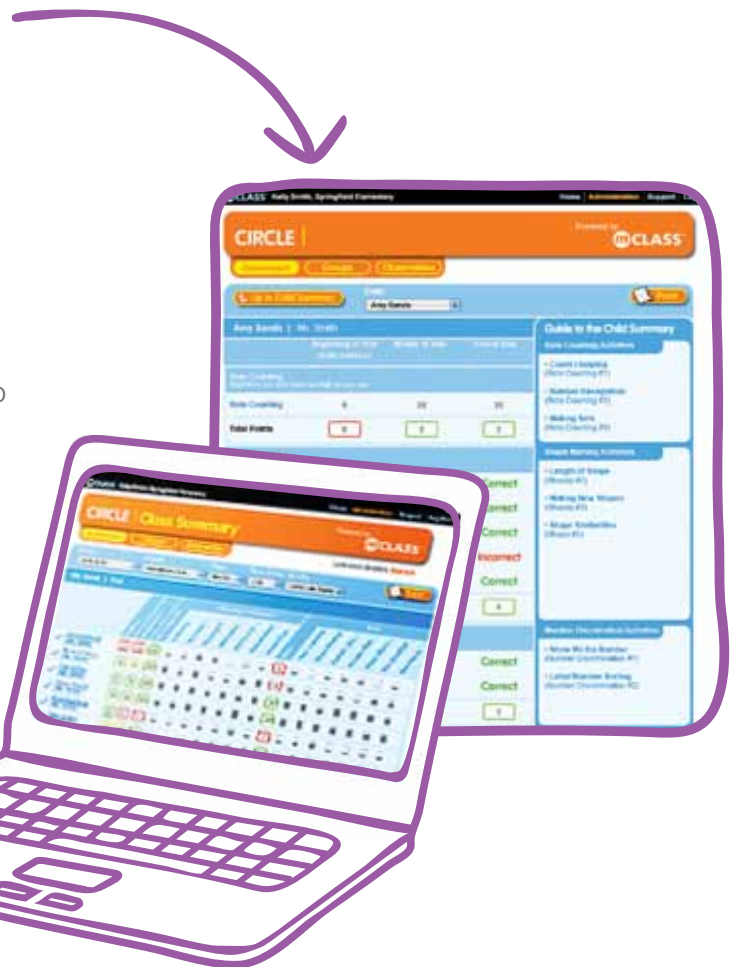
**mCLASS® CIRCLE™**

Pre-K Observational and Direct Assessment

**mCLASS® CIRCLE™** helps early childhood educators to observe and understand each child's ongoing social, emotional, early literacy, and early math development, and to be thoughtful and intentional in planning class, group, and individual activities for 3-, 4-, and 5-year-olds.

## mCLASS: CIRCLE Software:

- ▶ Enables evaluation and ongoing monitoring of socio-emotional development, book and print awareness, early writing, early math and early literacy skills, including vocabulary development, letter knowledge and phonological awareness skills, by facilitating meaningful 1:1 interaction between child and teacher.
- ▶ Allows educators to quickly and easily identify areas of concern or strength with easy-to-understand, meaningful reports.
- ▶ Helps teachers plan effectively by suggesting student, group, or class activities based on students' performance and progress.
- ▶ Saves time and ensures accuracy in administration and tabulation of assessment so teachers can spend more time on instruction.
- ▶ Makes age-appropriate 1:1 assessment available anywhere at any time since no internet connection is required during the assessment.
- ▶ Offers both English and Spanish versions of the assessment.



## mCLASS: CIRCLE at Work:

- ▶ Teachers observe and monitor each child's social and emotional development over time. The software highlights behaviors for teachers to observe.
- ▶ Brief, research-based tasks measure development of critical early literacy and math skills.
- ▶ Web-based reports help teachers plan activities for classrooms, groups, and individual children. Suggested activities are based on individual performance.



mCLASS:CIRCLE is compatible with a growing range of devices. On mobile and desktop computers running Microsoft® Windows® operating system, flip book images are integrated into the software for a seamless experience. Educators can deliver high-quality 1:1 assessments, sync, and take action all from one device. For more information about devices, please visit [wirelessgeneration.com/devices](http://wirelessgeneration.com/devices).



*Now with flip book images for letters, vocabulary, and math integrated into the software*

Developed in collaboration with Dr. Susan Landry and the University of Texas Health Science Center's Children's Learning Institute (CLI), and based on CLI's nationally recognized research and decades of early childhood education experience, mCLASS:CIRCLE delivers the CIRCLE suite of observational and assessment tools on a mobile device, with Web-based support for classroom planning and reporting.

**For more information, visit [wirelessgeneration.com](http://wirelessgeneration.com)**



**INSTRUCTIONAL IMPROVEMENT SYSTEMS**



**DIFFERENTIATED CURRICULUM & INSTRUCTION**



**ASSESSMENT & ANALYSIS TOOLS**



**PROFESSIONAL DEVELOPMENT & CHANGE MANAGEMENT**



**CONSULTING**



**OPEN SOURCE INITIATIVES**

